

Christian JULLIARD

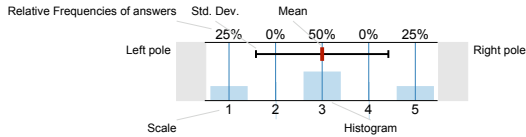
Forecasting Financial time Series - Lecture L1 (FM404-P-L1)

No. of responses = 17



Legend

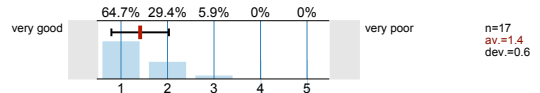
Question text



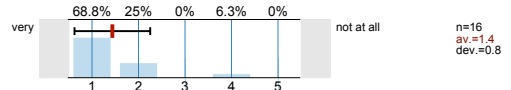
n=Amount
av.=Mean
dev.=Std. Dev.
ab.=Abstention

TEACHER QUESTIONS

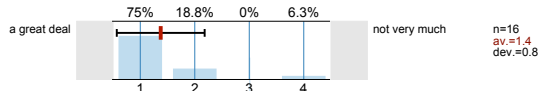
1) Overall, how would you rate the performance of this teacher?



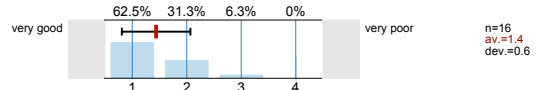
2) How stimulating did you find this teacher's teaching?



3) How much intellectual benefit have you gained from this teacher's teaching?



4) How would you rate the support you have received from this teacher outside of teaching sessions?



Profile

- Subunit: FM - Finance
- Name of the instructor: Christian JULLIARD
- Name of the course: Forecasting Financial time Series - Lecture L1
- Comparative line: Finance Teacher Survey LT09/10

1) Overall, how would you rate the performance of this teacher?



2) How stimulating did you find this teacher's teaching?



3) How much intellectual benefit have you gained from this teacher's teaching?



4) How would you rate the support you have received from this teacher outside of teaching sessions?

